

Financial Support for Experienced Professionals

Fostering Rotherham Fees and Allowances for Carers transferring to Fostering Rotherham



We believe that children and young people in Rotherham should grow up with the right conditions to allow them to be healthy, safe and achieve their potential in life. That's why we are looking for people who, with guidance and support, can help us to provide these conditions for children and young people in care.

Thank you for considering Fostering Rotherham. We welcome and value all foster carers who wish to transfer to us with a variety of additional benefits to match your skills and experience.

Foster carers like you change lives, and we believe you should be rewarded accordingly. When you transfer to us, if you already care for a child in care we will match your current fees or you will automatically join as a Level 3 carer to recognise your experience.

Alongside our competitive payments, you will automatically become part of our wide fostering family and be invited to regular events, meet-ups and training to help you make new friends and adapt to your new role with Fostering Rotherham.

And remember, our support team is always available for a friendly chat to answer any of your questions at a time to suit you. You can book a call back at www.fosteringrotherham.com/book or call us on **01709 357370**.

Other ways to get in touch

Visit: www.fosteringrotherham.com

Email: support@fosteringrotherham.com

Follow us on social

Facebook: [@FosteringRotherham](https://www.facebook.com/FosteringRotherham)

Instagram: [@FosteringRotherham](https://www.instagram.com/FosteringRotherham)

Twitter: [@Fosterrotherham](https://twitter.com/Fosterrotherham)



Contents

3. Our exclusive offer
5. Additional Financial Support
6. Example fostering allowances
8. Foster Carers and Self Employment
9. Financial Benefits
10. Additional support for Stepdown and Complex carers
12. Our fees and allowances broken down
13. What's next?

We Value the Amazing Work You Do

Fostering is a role that requires hard work, dedication and a lot of time. We believe it's a vital role to help a child feel safe, happy and healthy.

We value the hard work, time and dedication that our foster carers give day-in, day-out. That means that we'll support you so you can fully enjoy this rewarding role. We would never want a person's financial situation to be a barrier to them helping Rotherham's children.

We are committed to providing a competitive weekly allowance to enable you to focus your attention on the child in your care, making them feel cherished and valued and giving them the chance to thrive.

We pay allowances weekly to give you control over your budgets and easily respond to life's everyday needs.

These allowances break down into a skills-level based payment and an allowance for the child in your care.



Our Exclusive Offer to Experienced Foster Carers

Use our rates table to calculate how our allowances are tailored to you and your experience:

Fostering Fees:

		Skills Level 1	Skills Level 2	Skills Level 3	Skills Level 4
Foster carer fee per week	Per child	£120	£150	£210	£432
	Stepdown			+£200	
	Complex			+£100	

Fostering Allowances:

		Age 0-4	Age 5-10	Age 11-15	Age 16+
Weekly Allowance	Standard weekly fees	£170	£187	£213	£249



Additional Financial Support

In addition to your fostering fee and allowance payments, Fostering Rotherham foster carers also receive additional allowances to support the child in your care and make them feel at home.

Sadly, not all children come into care fully equipped with clothing. Foster carers can claim an extra allowance of up to £200 for clothing and up to £500 for equipment costs when the child is first admitted into care. Foster carers may also be able to claim up to £70 for school uniform costs.

Foster Carers also receive:

Up to £747 per year to pay for a looked after child's birthday, religious and cultural holidays such as Christmas and family holiday costs; Weekly mileage allowances to help you with transport a child in your care to school, activities and meetings.

		Age: Babies	Age: 1-4 (Pre-Primary)	Age: 5-10 (Primary)	Age: 11-15	Age: 16+
Basic Allowance	Standard weekly fees	£170	£170	£187	£213	£249
	Birthday allowance	£170	£170	£187	£213	£249
	Christmas allowance	£170	£170	£187	£213	£249
	Holiday allowance	£340	£340	£187	£213	£249
	Clothes allowance**	£75	£75	£75	£200	£200

**This is a one off payment paid at the start of the placement

One of our fantastic social workers, Laura, shared a wonderful story of children in care:

“It can be really rewarding being able to give a child new experiences. I worked with two siblings who were aged 8 and 9 years old. They'd never been to the seaside before, and their foster carer had a caravan near a beach. They had such an amazing time together! The children spent all day on the beach making sandcastles and splashing in the sea. The family made some amazing memories. Many years later, they're still talking about their first time at the seaside.”

We believe it's vital to offer children and young people these experiences which make a big difference, whether it's a new jumper or a first holiday.

Example Fostering Allowances

How does this look on a daily basis?



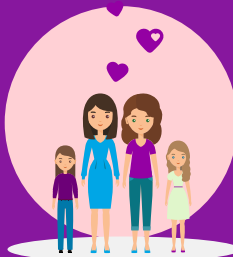
Steve and Patrica foster Lisa, an 11 year old child. As they have transferred from another fostering agency, they began their Fostering Rotherham journey as a Level 3 carers.

They receive:

£210 fostering fee per week
£213 fostering allowance per week
=£423 total per week

Over a year, they receive £21,996 plus up to £639 in additional allowances

= £22,635 total per year (likely to be tax free)



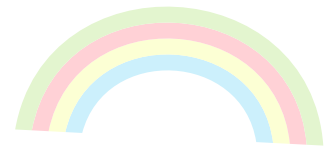
Lucy and Alison foster Kimra, aged 7 and Sarah, aged 13 as Level 3 carers. They receive:

£420 fostering fee per week
£400 fostering allowance per week
=£820 total per week

Over a year, they receive £42,640 plus up to £1,475 in additional allowances

= £45,115 total per year (likely to be tax free)





Example Fostering Allowances



Aadhya and Vishal foster Alec, a 9 year old child with additional needs. Due to their previous experience and skills in caring for children with additional needs, they are Level 4 carers. They receive:

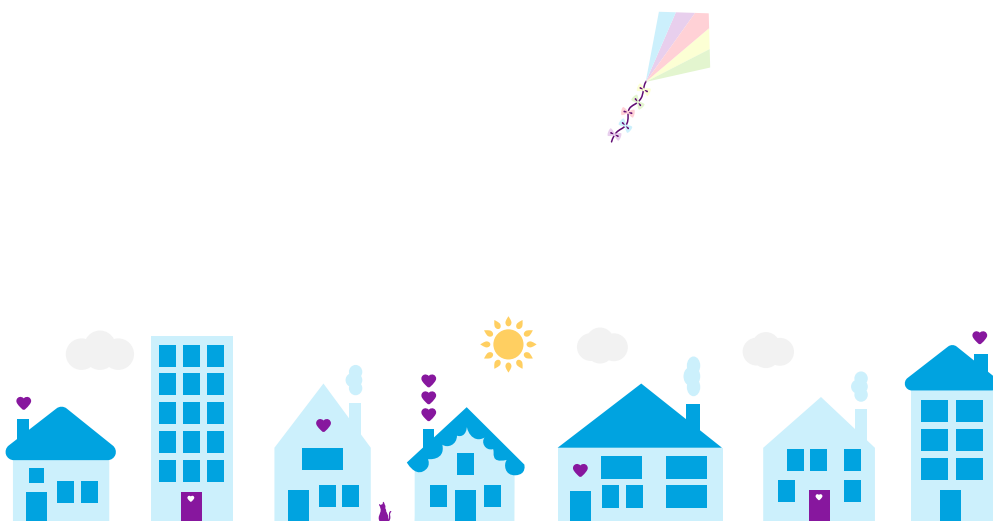
£632 fostering fee per week
£187 fostering allowance per week
=£819 total per week

Over a year, they receive £42,588 plus up to £561 in additional allowances
= **£43,149 total per year (likely to be tax free)**

Remember, your situation is always going to be unique to you and the children in your care. We always advise speaking to your fostering team to see how much you could earn as a foster carer.

Speak to our team today by calling 01709 357370 or booking a call back:
www.fosteringrotherham.com/book

*Monthly calculations are for demonstration purposes only and are based on having the placement scenarios in the examples above, in place full time for a period of 365 days per year. The amounts paid to you will be based on actual placement durations, your fostering skills levels and the age of the children placed with you. These care stories are fictional examples. No real names or stories of children have been used in the interest of safeguarding and privacy.



Foster Carers and Self Employment

Understanding how much tax you will pay as a foster carer can be confusing. Whether you're a whizz at filing your tax return or need some advice, our team can signpost you to great resources to help you meet your tax obligations.

What this means for you

All foster carers can use the Qualifying Care Relief tax scheme to reduce the amount of tax you have to pay.

You could be exempt from paying tax on all or most of your fostering earnings depending on:

- How many children in your care
- Whether or not it is a complete tax year
- Whether or not there are other carers in your household

You may also be eligible for means-tested benefits, as your fostering allowance is not usually counted towards your total income when calculating your eligibility.

For more information about tax benefits as a foster carer, please get in touch with our team, who will be happy to help and provide contacts who are experts at submitting tax returns for foster carers.



Financial Benefits at a Glance



We understand that transferring to a new fostering agency is a big decision. Our team will be with you every step of the way to help make the process as smooth as possible for you and any children in your care. You can transfer to Fostering Rotherham in 3 easy steps!

Four Reasons Why Fostering Rotherham Is Different:



Local Placement Teams

Our fostering home match team handles all home matches and referrals, but their hard work doesn't stop there. They also handle day care, teatime offerings and sleepovers for whenever your child needs them.



Fourteen Days Annual Leave

We understand how important it is for foster carers like you to feel rested, respected and ready to care for children. We offer all carers 14 days paid annual leave. If you have a child in your care at this time, they'll be supported by our respite carers who form part of your fostering community.



Local Experienced Teams

All of our team and foster carers live in the Rotherham area, so you will no longer have to travel long distances to training and support sessions. We have lots of local knowledge and experience helping South Yorkshire fostering families.



Local Mockingbird Hubs

When you are approved as a Rotherham carer, you will receive a personalised introduction to your local Mockingbird hub leader and our fostering community.

“Mockingbird is great to create one big family, the kids know each other. You don't tend to get that with IFAs.” - Amanda, a Fostering Rotherham carer who previously fostered with an independent fostering agency.



Additional Support for Stepdown and Complex Carers

Stepdown care is provided for young people who have previously been or currently live in a residential care home. Many of these young people would thrive in a fostering family environment. We have incredible carers who offer care to these children and young people, known as Stepdown carers.

What does Stepdown care involve?

Ultimately, Stepdown is all about providing stability to a child who might have experienced a lot of changes in their life. As a Stepdown foster carer, you offer:

- Support to a young person's education
- A warm and caring environment
- Daily activities to support emotional and psychological wellbeing using a therapeutic model
- Close communication with a network of professionals (including social workers, medical and therapeutic teams)
- Time for a chat and a cuppa together at the end of the day

A lot of Stepdown overlaps with long term fostering requirements, so it's easily learned by an experienced and enthusiastic carer.

How do I know Stepdown is for me?

If you have experience of caring for and working with children or have fostered before, you might want to help older children who have experienced some difficulties. We're always looking to recruit more experienced carers to foster for our Stepdown Programme, as well as those who can care for a child with more complex health or behavioural needs.

You may come from a background working with:

- Older children in a school or a pupil referral unit
- Children and young people that experience mental health, emotional and behavioural difficulties such that they need specific care on a continuous basis
- Children and young people during and after a challenging time in their lives, whether in a medical or a residential setting



How we support our Stepdown carers

These young people have likely experienced a number of moves from one home to another, and they need stability and therapeutic care. Being a Stepdown foster carer is a full time role. It is also incredibly rewarding with the right support around you.

Because there's an increase in the demands on your time and skills as a foster carer, we offer additional support both in terms of our team members and our financial package.

We offer up to £881 a week, which equates to £3,524 a month, for Stepdown care.

How this works:

Stepdown carers receive a complex payment of £200 a week. This is in addition to your carer fee, which will be paid at Skills Level 4 (£433.86). With carer fee, children's allowance and the complex payment you could receive anywhere between £802.86 and £881.86 per week. The only variation here would be around the child's allowance so the skills level and complex care pay would be static at £632.86 per week.

We appreciate that when caring for a child with very complex needs and/or disabilities, you will need an additional level of support. Children with complex needs may have a long-term health condition or severe disability. Some children may have particular emotional needs that need extra care and support. We always recommend therapeutic support for complex care. Our complex carers dedicate an incredible amount of time to helping these young people. To aid you, we offer your Skills Level carer fee and the child's weekly allowance (which depends on their age), as well as a complex payment of £100 a week.

Taking on the additional time needed to be a Stepdown or Complex carer doesn't mean you won't feel our support. We have a positive group of second home carers able to support your annual leave. This means you'll feel refreshed and ready to help a child who needs you.

You can read more about how these rates are calculated in the Our Fees and Allowances Broken Down section. We also recommend that you discuss your complex care with your social worker, who can confirm the right financial support for you and the child in your care.



Additional Financial Support

We also offer additional financial support to all our carers including paid annual leave, travel allowances and discounts at highstreet retailers.



Annual Leave

We know that all parents need a break from time to time so that they can come back feeling refreshed. Foster carers are no different. That's why we offer all our carers optional 14 days paid annual leave so you can come back rested and ready to give the very best care and support to the child in your care. Whilst you take your leave, we will arrange a second home placement for the child in your care. This includes finding care options for the child in your care while you're away.



Discounts and Benefits

Making memories as a family is one of the most rewarding aspects of foster care - for both children and adults alike. To ensure that you're able to experience days out, with all the joy they bring, you'll be eligible for a wide range of discounts around Rotherham, including the Rothercard. You'll also automatically become a member of The Fostering Network, which brings with it an additional range of benefits.



Fuel

A big part of a foster carer's daily routine is the school run, as well as helping a child to attend any other appointments that may be necessary. This includes visits with birth families. So that the cost of these trips doesn't add up, we pay a contribution of 45p per mile towards fuel costs.



Training

We're committed to enabling our foster carers to develop their skills, always helping them to reach their goals. So you can reach your full potential, we provide a wide range of ongoing training opportunities. Every year we offer free training to help you advance your skills level so you can support more of Rotherham's most vulnerable children and young people.

We're here for you, every step of the way.

Talk to one of our expert fostering team today by booking in for a call back here: www.fosteringrotherham.com/book

Our Fees and Allowances Broken Down

Terms and conditions:

This document was last updated in July 2024 with fee changes in effect from 1st July 2024. We reserve the right to review and amend our rates at any time without prior notice

		Skills Level 1	Skills Level 2	Skills Level 3	Skills Level 4
Foster carer fee per week	Per child	£120	£150	£210	£432
	Stepdown			+£200	
	Complex			+£100	

* Once a carer is approved to Skills Level 2, the additional payment changes from Skills Level 1. The Skills Level payments are not cumulative payments.

		Age: Babies	Age: 1-4 (Pre-Primary)	Age: 5-10 (Primary)	Age: 11-15	Age: 16+
Basic Allowance	Standard weekly fees	£170	£170	£187	£213	£249
	Birthday allowance	£170	£170	£187	£213	£249
	Christmas allowance	£170	£170	£187	£213	£249
	Holiday allowance	£340	£340	£187	£213	£249
	Clothes allowance**	£75	£75	£75	£200	£200

**This is a one off payment paid at the start of the placement.



“Payments shown are per child in your care and are cumulative. For example, a Skill Level One foster carer with one child in their care would receive £120 allowance, whereas a Skill Level One foster carer with two children in their care would receive £240.”

- Diane, Fostering Adviser

What's Next?

Now that you have read about the financial support we offer you may want to discuss this further with one of our team. They can walk through what the fees and allowances mean for you and your family on a weekly basis.

To speak to one of our team visit our website or call us on the details below:

We are looking forward to speaking with you.



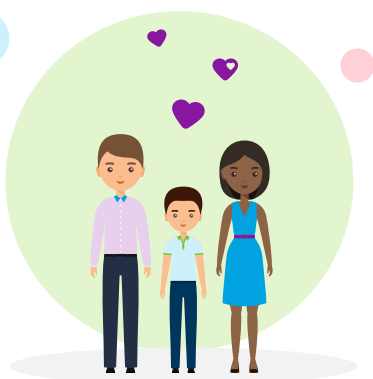
Website
www.fosteringrotherham.com/book



Phone
01709 357370



Email
support@fosteringrotherham.com



Terms and conditions:
This document was last updated in July 2024. We reserve the right to review and amend our rates at any time without prior notice.