

# Financial Support for Experienced Professionals

Fostering Rotherham Fees and  
Allowances for Carers



We believe that children and young people in Rotherham should grow up with the right conditions to allow them to be healthy, safe and achieve their potential in life. That's why we are looking for people who, with guidance and support, can help us to provide these conditions for children in care.

**Here at Fostering Rotherham, we want you to feel valued. That's why we provide financial support to all our foster carers for the amazing work they do.**

Although money might not be your first concern, it is important that you understand the fees and allowances in order to decide if fostering is affordable for your family.

On average, our foster carers earn £453 per week but this can increase up to £681 per week. This to recognise their care for children and young people who need help in our community. The actual amount you will earn will depend on how many children you are caring for, their ages and other factors such as they different types of foster care. It will also depend if you are full-time or a part-time foster carer.

### **Our Financial Support Guide**

This guide will help to give you a clear idea of the financial support you will receive from us, including financial payments, help with child care, annual leave and tax breaks.

And remember, our support team is always available for a friendly chat to answer any of your questions at a time to suit you. You can book a call back at [www.fosteringrotherham/book](http://www.fosteringrotherham/book) or call us on **01709 357370**.

### **Other ways to get in touch**

Visit: [www.fosteringrotherham.com](http://www.fosteringrotherham.com)

Email: [support@fosteringrotherham.com](mailto:support@fosteringrotherham.com)

### **Follow us on social**

Facebook: [@FosteringRotherham](https://www.facebook.com/FosteringRotherham)

Instagram: [@FosteringRotherham](https://www.instagram.com/FosteringRotherham)

Twitter: [@fosterrotherham](https://twitter.com/fosterrotherham)



### **Contents**

3. We value your work
4. How fostering fees compare to your current salary
6. Tax break benefits
7. How our fees are calculated
10. Additional financial support
11. Additional support for Stepdown and Complex Carers
13. Our fees and allowances broken down
14. What's next?

# We Value the Amazing Work You Do

## We think you have the skills to foster

Fostering is a role that requires hard work, dedication and a lot of time. We believe it's a vital role to help a child feel safe, happy and healthy.

Foster carers come from all walks of life, including careers such as teaching, health and social care roles, early years support roles and child minding.

As a professional from one of these fields, we appreciate that you regularly provide dedicated care and support to children in an education or social setting. This experience gives you fantastic transferable skills to apply to caring for vulnerable children and young people on a one-to-one basis.

Just like any important job, fostering provides a community of support. Part of this support includes receiving competitive financial allowances.

**We want to help our fantastic carers do the job they do to the best of their ability, and that includes offering a skills-based allowance where you are rewarded for your skills and experience from previous roles.**

Your relevant experience means that you can be approved as a Skills Level 2 foster carer straight away. Once you're an approved carer, your ongoing development will be a key priority, and you will have a plan which can enable you to work towards a progression to Skills Level 3. This will offer you greater benefits and allow you to work with more complex child placements.

Your skills-based allowance helps a child in your care feel looked after, so they can thrive in your home. We want all children to feel safe, happy and achieve their potential in life- and part of that includes providing financial support so you can make that happen.



# How fostering fees compare to your current salary

Fostering allows you to centre your career around the specific needs of a child. We believe that everybody entering fostering receives the right financial support to help with their everyday life, and you are no exception.

Our allowances break down into weekly skills payments and allowances to help support the children in your care. You can also enjoy tax benefits as a foster carer, based on your self employed status (more on this in our tax break benefits section). With substantial tax allowances and competitive skills based fees, your fostering allowance could be similar if not better than your current salary.

Here are some examples of how much you could earn as a skilled foster carer:



**Jane** is coming up to retirement after twenty years working in the paediatric unit. Jane didn't want to be running around after smaller children, so she's been approved as a foster carer for teenagers. Her first placement has been Abigail (17) and her brother George (13).

**Jane currently earns:**

Weekly take-home	NHS Pension	Skill Level 2	Skill Level 3	Fostering Allowance	Skill Level 2 and Pension	Annual Equivalent
Two Children	£376.92* (after tax)	£300	£420	£462	£1,137.92	£59,171.84

Jane had no idea she could earn as much as £681 a week as a foster carer. Together with her pension, she's able to feel comfortable and supported in her everyday life.

\*Based on national average salaries. Last updated March 2022

# How fostering fees compare to your current salary



Robert and his wife Sharon found themselves restless after retiring. They considered fostering a few years ago, so decided to look into it after Robert took early retirement. Robert has plenty of SEND experience so he's been approved at Skills Level 3 (which comes with higher weekly payments). Robert and Sharon care for Aaron (12).

**Robert currently earns:**

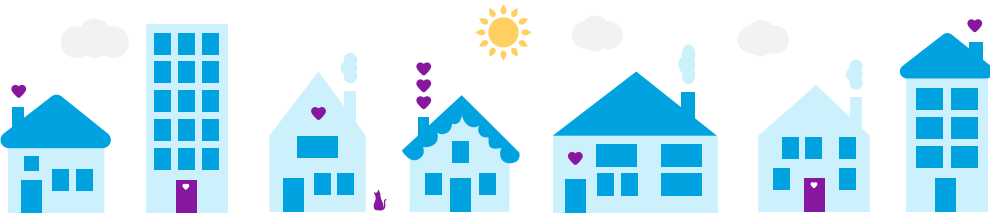
Weekly take-home	Previous Salary	Skill Level 3	Fostering Allowance	Weekly Take-Home	Annual Equivalent
One Child	£318.89* (after tax)	£210	£213	£423	£21,996

Robert and Aaron have made a great bond and Aaron's teachers have noticed a really positive impact on his schoolwork since the placement began. Robert and Sharon are considering a second placement, which brings new challenges but new rewards!

\*Based on national average salaries. Last updated March 2022

There are so many ways that fostering can fit around your life and work, whether you'd like to take on fostering full time or pair it with your current job.

Book a check-in call with one of our fostering advisers to discuss your options: [www.fosteringrotherham.com/book](http://www.fosteringrotherham.com/book)



## Tax Break Benefits



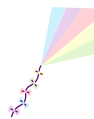
As a foster carer you will benefit from excellent tax break benefits. Every foster carer has a basic tax allowance of £10,000 per household per tax year (a household allowance would be the same whether you're fostering as a single carer, or you live with another carer). On top of this, you'll receive a tax allowance for every child you foster, with the exact amount depending on their age.

Once your tax threshold has been set up, you could be exempt from paying tax on all or most of your fostering earnings.

We won't leave you in the dark with tax queries. Our partners at The Fostering Network can help you with all your tax support needs. You automatically become a member of the Fostering Network once you've been approved. You can find more info about The Fostering Network's free advice, and fixed fee tax service, on their website.

Our tax support is just one element of our wide-reaching support offer for foster carers. You can find out more about how we'll help you, and the children in your care, by downloading our info pack here.

\*please note that we cannot advise you on your personal financial situation and that you should seek advice from an independent financial adviser or tax adviser, we will help you to access guidance documents from the tax office and from reputable organisations such as Fostering Network.



**Our financial benefits package is just one element of the wide range of support we provide for our newly qualified foster carers.**

**Download our information pack to find out more.**

# How our Fees are Calculated

On average, our foster carers earn £453 per week but this can increase up to £681 per week.

This figure differs for everyone, because it's based on skills level assessment and the number of children in your care, as well as their needs.

Your relevant experience means that you can be approved as a Skills Level 2 foster carer straight away. This comes with a competitive allowance, and plenty of recognition to match your knowledge. Once you're an approved carer, your ongoing development will be a key priority, and you will have a plan which can enable you to work towards a progression to Skills Level 3. This will offer you greater benefits and allow you to work with more complex child placements.

**How does this look on a daily basis?**



**Karen** is a foster carer approved at Skills Level 2. She currently cares for Phoebe (5) and Adam (8)

Karen's foster carer fee is £300 a week, and her allowance is £374.

**Total £674 per week/ £2,696 per month**



**Barney** was a residential care worker when he pivoted to fostering. That means he automatically qualifies for Skills Level 2. Because of his previous experience working with teenagers, Barney cares for Dylan (16).

He receives a £150 carer fee per week, and an allowance of £249 per week.

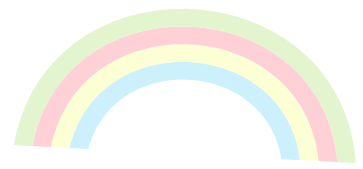
**Total £399 per week/£1,596 per month**



**Holly** and her partner Lorna are carers together. Holly was a home support staff for children with more complex needs so she's qualified as a Skills Level 3 carer. Together, Holly and Lorna care for Alex (8).

They have a carer fee of £210, a complex care fee of £100, and an allowance of £213.

**Total £523 per week/ £2,092 per month**



## How our Fees are Calculated



**Frank and Alice** are Skills Level 3 carers. Frank took early retirement from his paediatric role to take up fostering full time, while Alice still works part time. They currently have two children in their care, Sierra (12) and Jono (14).

Their carer fee is £420 a week, and allowance is £426.

**Total £846 per week/ £3,384 per month**



**Diane** had a lot of experience working with children and young people with additional needs. Now she's a Skills level 3 foster carer and is able to give that 1 on 1 attention in her own home. Diane looks after Finn (4), who needs constant support.

Her foster carer fee is £410 including a Stepdown fee, and allowance is £170.

**Total £580 per week/ £2,320 per month**

Remember, your situation is always going to be unique to you and the children in your care. We always advise speaking to your fostering team to see how much you could earn as a foster carer.

Speak to our team today by calling **01709 357370** or book a call back: [www.fosteringrotherham.com/book](http://www.fosteringrotherham.com/book)

\*Monthly calculations are for demonstration purposes only and are based on having the placement scenarios in the examples above in place full time for a period of 365 days per year. The amounts paid to you will be based on actual home match durations, your fostering skills levels and the age of the children placed with you. These care stories are fictional examples. No real names or stories of children have been used in the interest of safeguarding and privacy.





# Allowances to Support Children in your Care

Some children enter care under emergency situations. They may come to you with few belongings, or none at all. We want to ensure you're able to help them experience everything that makes a child happy and healthy. Equally importantly, we want them to have fun with you.

Part of your weekly allowance will be set aside for the child in your care. This includes everyday items, such as clothing and food costs. We also encourage children in care with a weekly pocket money allowance, so they can have a say in how their money is spent.

We offer up to £200 for clothing, and £500 for any bedroom equipment, car seats or other activities. A big part of a child's life is school, too. We offer up to £70 in a one-off payment so you can buy school uniform.



**"Children enter foster care for a whole range of reasons. In some cases, a child will arrive with very few belongings. When you first become a foster carer we will contribute up to £500 for equipment that you may need when a child is matched with you. We also provide up to £200 for clothing and up to £70 for school uniform."**

- Diane, Fostering Adviser



## Special Occasions

We want every child to experience the magic of special occasions like trips, birthdays and religious holidays, as well as clothing allowance. To help with this, we provide one-off payments of up to £947 a year.

## One of our fantastic social workers, Laura, shared a wonderful story of children in care:

"It can be really rewarding being able to give a child new experiences. I worked with two siblings who were aged 8 and 9 years old. They'd never been to the seaside before, and their foster carer had a caravan near a beach. They had such an amazing time together! The children spent all day on the beach making sandcastles and splashing in the sea. The family made some amazing memories. Many years later, they're still talking about their first time at the seaside."

We believe it's vital to offer children and young people these experiences which make a big difference, whether it's a new jumper or a first holiday.

# Additional Financial Support

Our financial offer to you is far-reaching, and includes plenty of additional benefits. You can read about our full support offer on our website: [www.fosteringrotherham/support](http://www.fosteringrotherham/support)



## Annual Leave

We know that sometimes you'll want time between matches. We offer up to 14 days paid leave every year. If you have a child in your care at this time, they'll be supported by our respite carers who form part of your fostering community



## Discounts and Benefits

We understand that fostering isn't all school runs and getting homework done- we want you and the child in your care to have fun together. All of our foster carers receive discounts in the local area, thanks to our Rothercard and Blue Light Card. This is an easy way to brighten up your weekends together, and make lasting memories for the child that they'll always thank you for.



## Fuel

Part of a foster carer's daily routine involves taking the child in your care to school, activity clubs or visits with their birth family. We'll support your journey with mileage offers so you can get around more easily. Our weekly allowance includes up to 40 miles per week for transporting a child. In addition, you can claim another 40p per mile for longer transport requirements.



## Training

We also want you to benefit from your relationship with Fostering Rotherham. As a part of our fostering community, you'll always have the chance to level up your skills. Your supervising social worker will work with you on a professional development plan. This personalised plan means you have an opportunity to develop your expertise even further, and help more local children.

## We're here for you, every step of the way.

Our professional development plan is just one of the ways we support your growth. Find out more about our training here. There are so many ways that fostering can fit around your life and work, whether you'd like to take on fostering full time or pair it with your current job. Book a check-in call with one of our fostering advisers to discuss your options: [www.fosteringrotherham.com/book](http://www.fosteringrotherham.com/book)

# Additional Support for Stepdown and Complex Carers

Stepdown care is provided for young people who have previously been or currently live in a residential care home. Many of these young people would thrive in a fostering family environment. We have incredible carers who offer care to these children and young people, known as Stepdown carers.

## What does Stepdown care involve?

Ultimately, Stepdown is all about providing stability to a child who might have experienced a lot of changes in their life. As a Stepdown foster carer, you offer:

- Support to a young person's education
- A warm and caring environment
- Daily activities to support emotional and psychological wellbeing using a therapeutic model
- Close communication with a network of professionals (including social workers, medical and therapeutic teams)
- Time for a chat and a cuppa together at the end of the day

A lot of Stepdown overlaps with long term fostering requirements, so it's easily learned by an experienced and enthusiastic carer.

## How do I know Stepdown is for me?

If you have experience of caring for and working with children or have fostered before, you might want to help older children who have experienced some difficulties. We're always looking to recruit more experienced carers to foster for our Stepdown Programme, as well as those who can care for a child with more complex health or behavioural needs.

You may come from a background working with:

- Older children in a school or a pupil referral unit
- Children and young people that experience mental health, emotional and behavioural difficulties such that they need specific care on a continuous basis
- Children and young people during and after a challenging time in their lives, whether in a medical or a residential setting



## How we support our Stepdown carers

These young people have likely experienced a number of moves from one home to another, and they need stability and therapeutic care. Being a Stepdown foster carer is a full time role. It is also incredibly rewarding with the right support around you.

Because there's an increase in the demands on your time and skills as a foster carer, we offer additional support both in terms of our team members and our financial package.

We offer up to £881 a week, which equates to £3,524 a month, for Stepdown care.

### How this works:

Stepdown carers receive a complex payment of £200 a week. This is in addition to your carer fee, which will be paid at Skills Level 4 (£433.86). With carer fee, children's allowance and the complex payment you could receive anywhere between £802.86 and £881.86 per week. The only variation here would be around the child's allowance so the skills level and complex care pay would be static at £632.86 per week.

We appreciate that when caring for a child with very complex needs and/or disabilities, you will need an additional level of support. Children with complex needs may have a long-term health condition or severe disability. Some children may have particular emotional needs that need extra care and support. We always recommend therapeutic support for complex care. Our complex carers dedicate an incredible amount of time to helping these young people. To aid you, we offer your Skills Level carer fee and the child's weekly allowance (which depends on their age), as well as a complex payment of £100 a week.

Taking on the additional time needed to be a Stepdown or Complex carer doesn't mean you won't feel our support. We have a positive group of second home carers able to support your annual leave. This means you'll feel refreshed and ready to help a child who needs you.

You can read more about how these rates are calculated in the Our Fees and Allowances Broken Down section. We also recommend that you discuss your complex care with your social worker, who can confirm the right financial support for you and the child in your care.



# Our Fees and Allowances Broken Down

## Terms and conditions:

This document was last updated in July 2024 with fee changes in effect from 1st July 2024. We reserve the right to review and amend our rates at any time without prior notice

		Skills Level 1	Skills Level 2	Skills Level 3	Skills Level 4
Foster carer fee per week	Per child	£120	£150	£210	£432
	Stepdown			+£200	
	Complex			+£100	

\* Once a carer is approved to Skills Level 2, the additional payment changes from Skills Level 1. The Skills Level payments are not cumulative payments.

		Age: Babies	Age: 1-4 (Pre-Primary)	Age: 5-10 (Primary)	Age: 11-15	Age: 16+
Basic Allowance	Standard weekly fees	£170	£170	£187	£213	£249
	Birthday allowance	£170	£170	£187	£213	£249
	Christmas allowance	£170	£170	£187	£213	£249
	Holiday allowance	£340	£340	£187	£213	£249
	Clothes allowance**	£75	£75	£75	£200	£200

\*\*This is a one off payment paid at the start of the placement.



**“Payments shown are per child in your care and are cumulative. For example, a Skill Level One foster carer with one child in their care would receive £120 allowance, whereas a Skill Level One foster carer with two children in their care would receive £240.”**

- Diane, Fostering Adviser

# What's Next?

If you have any questions about this Financial Support guide we would be happy to help. We're here for you every step of the way.

Talk with one of our expert fostering team today by contacting us on the details below.

We are looking forward to speaking with you.



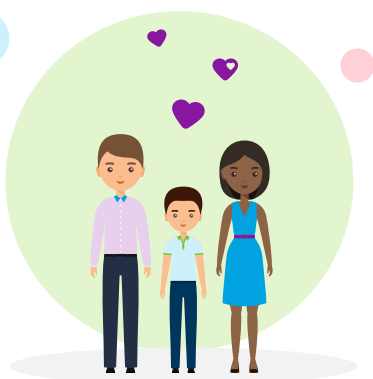
**Website**  
[www.fosteringrotherham.com/book](http://www.fosteringrotherham.com/book)



**Phone**  
01709 357370



**Email**  
[support@fosteringrotherham.com](mailto:support@fosteringrotherham.com)



Terms and conditions:  
This document was last updated in July 2024. We reserve the right to review and amend our rates at any time without prior notice.